

# LIVE & GROW

## *Flower Hack*

*Creating a floral arrangement at home?*

Take some time to explore your garden before you start – you never know what little gems you'll discover!

### IN THIS ISSUE

*All the tips, tricks and inspiration you need to help your garden 'spring' to life, plus...*

### A Plethora of Petunias

Check out our most popular colours, our exclusive breeds, and our European imports.

### Hey Presto, Basil Pesto!

Growing basil at home just got easier with the late-flowering Basil Pesto Party.



# Spring 2016

## WHAT'S INSIDE

- 4 Oderings Grown**  
New seasons flowers and veggies from the Oderings Wholesale team.
- 6 Oderings Landscaping**  
An exciting new service at Oderings with a team who will make your outdoor living complete.
- 8 Oderings New**  
New and innovative plants and products.
- 10 Calibrachoa**  
Stunning colour for pots, planters or the garden which just can't be beat.
- 11 Sassy Argyranthemum**  
An old favourite with a new twist.
- 12 Interior Spaces**  
Must have accessory pieces when decorating your home.
- 14 Summer Nights**  
Relax and create atmosphere, scent and drama in your own backyard.
- 16 Osteospermum Afrikaans**  
A great staple plant for the summer garden.
- 17 Petunia**  
Oderings new and exclusive perennial petunias this spring.
- 18 Lavender Flirtatious Purple**  
The ideal bee attracting plant with an addictive spicy fragrance.
- 19 Basil Pesto Party**  
A new basil for 2016, with a special claim to fame.
- 20 Little Gardeners**  
Fun for the kids with a DIY birdhouse project.



- 21 Impatiens Double Vision**  
Six exciting new additions for semi-shade.
- 22 Flower Hack**  
Take note of the flowers in your garden and learn the basics to make your own floral masterpieces.
- 23 Combat 3-In-1**  
A three-in-one fertiliser, fungicide and insecticide.
- 24 Bug R Off!**  
Don't get mad when bugs arrive in the garden, get even.
- 26 New Tomatoes**  
A taste sensation with these new tomato varieties.





## Oderings Live & Grow

Editor Pamela Smith

Advertising Nicola McKee

Creative Kirstin Jenkinson

Contributors Pamela Smith,  
Daniel Hart, Jenna Zanchettin

### Contact Us

Oderings Garden Centres Head Office

92 Stourbridge Street, Spreydon,  
Christchurch 8024

PO Box 33125, Barrington  
Christchurch 8244

P: 03 332 9099 F: 03 332 1585  
info@oderings.co.nz  
www.oderings.co.nz

### Store Locations

**Barrington** 03 332 9099

92 Stourbridge St, Christchurch

**Cashmere** 03 338 5193

205 Cashmere Rd, Christchurch

**Linwood** 03 982 3498

485 Linwood Ave, Christchurch

**Philpotts** 03 385 2386

116 Philpotts Rd, Christchurch

**Yaldhurst** 03 342 9198

20 West Coast Rd, Christchurch

**Hamilton** 07 855 6064

6 Sexton Rd, Huntington

**Havelock North** 06 877 3051

57 Brookvale Rd

**Napier** 06 844 8105

11 Allen Rd, Pakowhai

**Palmerston North** 06 356 6797

136 Cook St, West End

**Upper Hutt** 04 939 1020

1066 Fergusson Drive, Clouston Park

## Welcome

It's a sign of an amazing, colour-packed spring at Oderings when, as we are writing and organising the layout and images for this latest Live & Grow magazine, my focus is around how much colour there is and how we will best display it all. This influx of flowering spring and summer colour comes from the Oderings wholesale nurseries in Hawkes Bay and Christchurch, whose staff have been gearing up for nearly a year now to source you many exclusive, new or improved flowering garden staples.

Besides this outpouring of colour, there is so much fantastic stuff in this issue. From the trendy houseplants on page 12, to the DIY birdfeeder on page 20 and the new tomatoes on page 26, I really think every gardener, experienced or novice, will find quite a bit of interest in this issue. I know I certainly did!

Please join us this season for more inspirational ideas for your homes, both indoors and out, and remember to join us online to keep up to date about the Oderings workshops for customers, exclusive offers and VIP nights, by subscribing at [www.oderings.co.nz](http://www.oderings.co.nz).

Have a great spring and summer, but be cautioned before you read on: The colours in this issue are hot, explosive and really quite unique, and this issue is chock-full of useful hints and information for a successful garden every time.

### Happy Gardening,

Pamela Smith,  
Editor



© All content and images in this publication are subject to copyright and reproduction of any part is strictly prohibited.



**ODERINGS**  
GARDEN CENTRES



▲ LEWISIA MIXED

The dainty, daisy-like, bright, fruity-coloured blooms are held in clusters over the neat rosettes of fleshy foliage. A perfect eye-catching bedding plant that will brighten up any rockery, patio container or window box. Lewisia copes well in hot, dry conditions but is equally happy in cooler summers and can even be wintered over outdoors with some protection from wet weather.

NEMESIA MISTY BICOLOUR ▶

This fascinating beauty has flowers with an exceptionally sweet scent. The flowers, while quite small, come out in abundance, and if you look closely, you'll see they have a lavender-pink upper lobe and a white lower lobe with pretty yellow faces. Often described as "orchid-like" in appearance, these beauties are brilliant when used in mass plantings as a bedding border or in containers.



◀ BEGONIA OLYMPIA FLAME

The world's first! This stunning orange-coloured begonia has never been seen on NZ shores until this spring, and this is the first orange bedding begonia from seed. Begonia 'Olympia Flame' is a must-have and can bring a burst of bright orange to any shaded area in the garden, hanging basket or pot. This wonderful new colour addition is added to the already popular Olympia series, which has green, shiny, smooth, oval foliage.

VIOLA LAVENDER ICE ▶

Bringing something beautiful, different and unique to your garden, this bedding viola flower paints a picture of both warm and cool seasons with beautiful delicate flowers in clear white with lavender-blue picotee and deep-purple whiskers. Plant in semi-shade in the warmer season. Also did you know the flowers of violas are edible, so why not use them as a garnish in your next salad.



◀ SALVIA ICE WHITE

Never before have we seen such pure snow-white flowers on a salvia. We love the purity of the flowers, which attract bees and butterflies because they are full of nectar, making it a perfect addition to aid pollination amongst fruit trees, berries, beans and vegetable gardens.





## 1. MICROGREENS

Microgreens enhance any salad or dish when used as a garnish and are often referred to as “vegetable confetti”. The microgreen is a gourmet range grown to offer a high-quality salad mix with a selection of vibrant colours, tastes and textures. It is important to cut or pick them while they are young, when the first true leaves appear; otherwise they will become bitter in taste.

## 2. THAI BASIL

Thai basil is grown not only for its culinary use, but also as an ornamental plant for the lovely purple stems and veined leaves. Thai basil is a member of the mint family, and as such has a sweet flavour reminiscent of anise, liquorice and clove. Popular among the cuisines of Thailand, Vietnam, Laos and Cambodia, Thai basil has a pleasing aroma similar to sweet basil and is generally used fresh.

## 3. KALE COMBO

Kale is the king of all the healthy greens. Why stop at growing one type when you can grow a variety with this handy Kale combo pack, which includes Tuscan, Red Russian and Curly Kales? Kale is one of the most nutrient-dense foods on the planet and is loaded with

powerful antioxidants, vitamins and minerals, while helping to lower cholesterol. Include kale in your diet by incorporating it into salads and stir-fries, or as a healthy snack of kale chips or in a smoothie.

## 4. BROCCOLINI

Also known as Chinese broccoli, Chinese kale or baby broccoli, broccolini is a hybrid of broccoli. Broccolini has long, tender stalks topped with small florets that have a subtle, sweet flavour and a peppery, asparagus kick. It is becoming increasingly popular with chefs who appreciate the more refined taste. While you can pick the florets when needed, the whole plant is edible.

## 5. BROCCOFLOWER

A relatively new vegetable that is a cross between cauliflower and broccoli, tasting more like cauliflower, with a slightly milder and sweeter flavour than broccoli. Broccoflower originated from a green cauliflower grown in Italy and has heads ranging from lime-green to yellow-green. Most are smaller, lighter in weight and less crisp and dense than a white cauliflower. This vegetable is high in vitamins C and A and folic acid.





# ODERINGS

## LANDSCAPING



Does your garden match your lifestyle? The Oderings Landscaping team look at your garden and think of all the possibilities. Our mission is to make homes complete with unique solutions to reflect you, incorporating insightful planting combined with inspiring design to create a garden that is a practical and functional living space that works for you and your lifestyle.



A custom garden that is functional, practical and welcoming starts with our experts, who will create a tailored garden space just for you.

Not only do we tailor a garden just for you, but we create a service to fit. This means we can do as little or as much as you like, in stages or all at once. These stages are Consult, Design, Create, and Live.

**Consult** – Whether you are an experienced or novice gardener, it all begins with fresh ideas and solid advice from Oderings Landscaping. We are here to listen and offer expert advice to turn ideas into practical spaces that will work with your lifestyle. Whether you need some inspiration for an existing garden, some help selecting the right plants, or you don't know where to begin, the consultation process will help get your garden on the right track.

**Design** – Often after a garden consultation our clients are full of inspiration and ideas, and we as landscapers have a firm understanding of what you, our clients, want. Generally the best way to put these thoughts into a cohesive theme is to have Oderings Landscaping create a landscape design plan. A plan from us considers the theme, colour pattern, scent and balance of the overall structure of your garden. With existing gardens, Oderings Landscaping will design the space around the existing plants you want to keep and incorporate structure through adding plants, paths, decks or even raised garden beds. With new gardens, we will

tailor design a space that includes all your wishes, creating structure through paths, decks or patios, imitating nature through clever planting schemes.

**Create** – This is where your customised service comes to life. Choose from a complete service where Oderings Landscaping will undertake or supervise the “hardscaping” with decks, fences and paths. A little Kiwi DIY can come into play for the “softscaping”, where we place the plants and you plant them, or we would love to assist and plant them all for you. You can also choose to do the garden in stages. However you wish to create your revived garden, we can help every step of the way.

**Live** – Once our job is done, you will get to enjoy a space that reflects you, combining nature with your lifestyle to achieve harmony.

**Our Services** – At Oderings Landscaping we strive to offer you the “full package” where you can work with a trusted and reputable team throughout the entire process. We offer quality plants, products and services from conception through to completion for both residential and commercial projects.

So whether it is just advice on where to place your new plants or a full landscape service for your garden, we are here to help.



## MEET OUR TEAM



**Jeremy Odering** – Landscape Manager (Christchurch)

Jeremy takes pleasure in creating to transform spaces using his vast expertise and skill in horticulture, building and landscaping. He enjoys the challenge that landscaping offers, allowing him to use problem solving skills to create functional and appealing spaces.

Jeremy grew up in the Oderings family business and in 2012 he flew the nest to try his hand in the landscaping industry with a reputable landscaping company. This eventually led him to start his own landscaping business.

Jeremy is bringing this landscaping knowledge and experience back into the family business, forming a landscaping division at Oderings.



**Lyn Henry** – Consultation & Design (Christchurch)

Lyn has many years of experience and knowledge turning peoples' gardening dreams into reality. Her passion lies in landscape design, specializing in garden consultations and computer-generated plans, from developer's approval to the home gardener. Lyn has completed large commercial plantings as well as small courtyards, paying attention to detail to make spaces functional and workable.

Full of passion and energy, she loves the challenge of what every job brings, always keeping in mind what the client wants.

She is fully qualified through an apprenticeship in gardening and horticulture.



**Jono Marshall** – Consultation & Design (Upper Hutt)

With an honours degree in visual art and design, Jono took his creative skills and applied them to the garden, studying horticulture and landscape design.

Jono furthered his plant and landscaping knowledge at Oderings Garden Centres over the last three years. Jono has a passion for getting people excited about their gardens and inspiring clients to picture how they can transform their outdoor areas into spaces they love spending time in.

Jono enjoys creating modern gardens with clean lines using bold and contrasting foliage plants. However, he has the versatility to create gardens of all styles.

For more information and a full list of services, contact us at [admin@oderingslandscaping.co.nz](mailto:admin@oderingslandscaping.co.nz) or visit our website at <http://www.oderingslandscaping.co.nz/>



**MAXIMISE THE  
NATURAL GOODNESS  
IN YOUR GARDEN**

**Prepare your garden for spring  
planting with Tui's range of  
BioGro certified products. Find  
out more at [tuiproducts.co.nz](http://tuiproducts.co.nz)**



# Spring '16



Moss in the lawn? Algae on the deck? New Yates Moss & Algae Killer can deal with both. Kills moss and lichen on paving, brick and timber. Plus, having no harsh surfactants allows for safe use on lawns too.



The kokedama kit has all the necessary ingredients for creating your own kokedama. The kokedama or moss ball looks great hanging or placed on a decorative plate on a table or bench.



Smart Lawn Seed is coated with patented Aqua Gel technology, which guarantees germination and a great lawn in any situation. Perfect for fixing patches or for sowing a whole new lawn. Available mid-October.



Gro Sure Easy Wildflowers are the easy way to attract bees and butterflies to your garden this summer. Simply shake out the pack, scattering the contents into containers or flowers beds, and water, for long-lasting beautiful wildflowers.



Protect your fruit trees from Guava moth! Use these eco-friendly pheromone sticky traps for effective trapping and monitoring of Guava moth, which attack Guava, citrus, soft fruit, Feijoa and Macadamia trees.



The Elho XL 60cm Trough is perfect for everyday use on the patio or balcony. The stabiliser wire will stop the trough from bulging, making this the ideal mini garden for an easy harvest.



Lawn Thickener is the easy way to nourish and thicken your lawn. It contains a blend of premium seed and nourishment for lush green results, and a built in spreader for ease of use.



The Nutra Feeder is designed for feeding Topflite nectar liquid mix or plain water, to attract New Zealand's native birds such as Tuis, Bellbirds and Waxeyes.



The P2 Respirator Mask includes a comfort valve to prevent heat and moisture build-up and a carbon filter to eliminate odours. Ideal for using with potting mix or when spraying low-vapour chemicals like weed killer or pesticides.





**Coprosma Pacific Sunset** – A striking glossy leaf consisting of a vivid red centre set against a burgundy/chocolate-brown margin. Grows to 1m tall. Available October.



**Begonia Olympia Flame** – The world's first orange bedding begonia. Bright-orange blooms on compact, glossy green foliage. Ideal for garden borders or pots. Frost tender and shade loving.



**Lavender Blue Chips** – Exciting, beautifully scented deep-blue flowers open into generous flower heads, which are ideal for picking as they will retain their colour when dried.



**Coprosma Pacific Sunrise** – An exceptional trendsetter with chocolate brown foliage and hot-pink highlights. Stunning in pots, growing to 1m tall. Available October.



**Gerbera Sunrise** – Produces large vibrant fiery orange-red outer petals, which fade to lemon, and a red-yellow centre. Flowers stand strong on sturdy stems making it a standout in pots, planters or the garden.



**Calibrachoa Strawberry Shortcake** – Stunning long-lasting, red and white bicolour flowers, which cascade beautifully from baskets or containers. Performs throughout spring, summer and autumn.



**Lavender Sweet Romance** – An intensely fragrant lavender with grey-green foliage, which forms compact mounds, topped with plump, rich violet-purple flowers in summer. Great perennial for rock, scented or herb gardens.



**Gerbera Sunset** – If ever there was a tailor-made flower for bold, beautiful colour, this gerbera is it, with its cooler rose-pink outer petals, which fade to lemon, and a pink-yellow centre.



**Calibrachoa Tsunami Firestorm** – Non-stop flower power through spring and summer is easy with the Calibrachoa and its stunning long-lasting, bright-orange flowers, which cascade beautifully from baskets or containers.

*Note: Sorry for the inconvenience with some varieties not being available until October. We are happy to put your name in our order book and call you when they become available.*



Tsunami Firestorm – Scorching tones of bright orange with deep-bronze veins.



Strawberry Shortcake – Red and white bicoloured flowers.



Tsunami Yellow – Stunning bright yellow.



Tsunami Red – Bright red with a yellow throat.



Tsunami Light Blue – Baby blue with a yellow throat.



Tsunami Blue – Bright blue with a yellow throat.



# Calibrachoa

The Calibrachoa: I can't sing their praises enough! What a beautiful array of cascading colour for hanging baskets, tipping over walls and banks, or in pots and planters. In my opinion, these little gems are the absolute best filler plant on the planet. They have a stunning vibrancy that can't be beat.

Calibrachoa look like a miniature petunia, and they flower nonstop from spring to frost. Calibrachoa can tolerate frosts and thrive in full sun or in partial shade, as long as they have well-drained soil. But like petunias, they do not like wet feet, so a careful watering regime is required. They are a short plant, growing only to about 15–20cm with a spread of around 50cm. After the first flush of flowers, prune by half to encourage repeat flowering. Slugs and snails would be their main enemy, so use slug bait throughout the season as required.



# THE SASSY ARGYRANTHEMUM

Add a touch of class to your garden with a nonstop display of beautiful single or double, daisy-like flowers, which are complimented by the neat, compact feathery foliage. This old-fashioned favourite has a new twist and is sure to attract attention. Aside from the amazing flowers, the best feature is the compact plant habit, which doesn't need constant trimming to keep a nice shape. The Sassy Argyranthemum is both beautiful and resilient with a naturally controlled habit that is ideally incorporated into pots, planters or the garden border. The stunning daisies sit neatly above the foliage and just don't quit, flowering from early spring until winter. In frost-free climates Sassy flowers last almost the entire year. This easy-to-grow plant prefers full sun in a hot and dry area with moderately fertile soil with good drainage.



NEW

Sassy Double White – New for 2016 with gorgeous pure-white double flowers.



NEW

Double Sun – New for 2016 on a taller growing plant.



Sassy Yellow – Fresh buttery-yellow single flowers.



Sassy Pink – Beautiful pink single flowers.



Sassy White – Pure-white single flowers.



Sassy Red – Bright red single flowers.



## Easy Hose-On Feeding

Hose-on format ideal for larger gardens and lawns.

All purpose - one product across the entire garden ie. vegies, flowers & lawns.



©Yates and Thrive are registered trade marks of DuluxGroup (Australia) Pty Ltd.



# HOUSEPLANT COOL

Trendsetters all over the world are looking to Instagram, Pinterest and home renovation shows for ideas and inspiration on what to do in their interior design, and houseplants are a key aspect for this trending phenomenon. Houseplants are what I fondly refer to as “Interior Landscaping” because a living interior is a concept all of its own.

Interior landscaping is about so much more than just a plant; it’s an accessory piece and a must-have when decorating your home. So this spring we invite you to take a journey of interior landscaping and fill your homes with bold statement pieces, matched with the right accessories, and watch your home come alive.

Featured here are the top picks for easy-care plants for your home this spring.

**Anthurium** – This plant will be a feature in your home with bright long-lasting flowers. The beauty of anthurium is when one flower dies another one appears. Place this plant in warm, bright filtered light or even a humid area. Frequent watering will prevent browning of leaves, or you might add a water reservoir underneath the pot.

**Syngonium** – Bright light is ideal for this plant, but as with most houseplants, do not place in front of the window, as this burns the leaves. Watering is easy – wait for the soil to almost dry out, then water again.

**Spider plant** – This plant can take a lot of abuse. The variegated leaves look fantastic when used as a hanging plant or on the top of a bookshelf, to showcase the hanging spider-like shoots. Make sure you keep in bright light. And don’t forget to water it often; regular watering helps to avoid brown leaf tips.

**Spiderwort** – Also known as wandering Jew, this lush cascading plant is great up high for the eye to catch the underside of the brilliant purple leaf. Place in a dim-to-bright light and water from the saucer or the bottom, keeping the soil moist but not soggy.

**Staghorn Fern** – The stag is unlike any other fern. Most ferns require plenty of water and shade, but not so with this silver-fronded fern. The staghorn fern requires only moderate watering and bright, indirect light. Keep it away from humid areas like the bathroom.

**Dieffenbachia** – Houseplant novice? This is a great starting plant. It’s very adaptable and can grow in bright-to-dim light but again, not on a windowsill. Water moderately.

**Philodendron** – Imperial Red is one bold plant, and its red-maroon leaves fade to a dark green with age. Make sure you keep it leaf-shined, as it hates dust on its leaves. Water only when soil has lost its moisture, and make sure you are not overwatering in the winter months. This philodendron tolerates humidity and warmth and responds well to bright filtered light.

All of these plants need to be fed at least once a month with a liquid fertiliser such as Baby Bio. If once a month is not your thing, use a long-term (every 4–6 months) fertiliser such as Oderings Total Replenish. Proper watering isn’t actually all that hard, and once you become experienced to your plants’ watering needs, you will be able to simply pick up the pot to gauge how dry your plant is. Most plants like to be watered moderately; this means avoiding soggy soil, letting the soil dry out between watering.

**Top Tip** – Don’t have waterlogged plants. Most detest sitting in a saucer or a pool of water in their pots.

Don’t forget to follow us on Facebook, Instagram and Pinterest for up-to-date ideas and inspiration, so we can continue your interior landscaping journey.

Plant clockwise from the top - Spiderwort, anthurium, dieffenbachia, spider plant, philodendron, syngonium, staghorn fern.

Image by Kallum Harris - [www.facebook.com/kallumharrisphotography/](http://www.facebook.com/kallumharrisphotography/)

# Summer Nights

*This summer relax and create mood, scent and atmosphere in your own backyard.*

## *Romance*

Set the atmosphere by lighting candles. Hurricane lamps and lanterns are a great way to contain a flame. Decorate your table or stairs with hurricanes and hang lanterns from trees or under eaves.

## *Comfort*

Pop some cushions and throws in a basket near the table so your guests are warm and comfortable.

## *Scent*

By having fresh flowers, it looks like you have gone the extra mile and makes your guests feel special. Place some freshly cut flowers on the table, and if you don't want to use fresh, try our lifelike faux flower range.

## *Lighting*

Seed lights look majestic and timeless in a glass hurricane or wrapped in trees near the table setting.



### *Colour injection*

Try incorporating one accent colour with either napkins or glassware. This always looks great with a neutral palette and will really make your dinner setting come alive.

### *Music*

Good sounds makes everything so much more festive and helps everyone to relax and socialise.

### *Greenery*

Grab your scissors and go foraging. Foliage looks great draped in the centre of the table. Bind the foliage in some natural sisal or calico. Also great are the faux buxus balls or moss rocks.

### *Mozzies be gone*

Citronella candles are a must-have if entertaining at night.



# OSTEOSPERMUM AFRIKAANS



Are you looking for a garden staple this summer that is magnificent and striking? Then you need to look at this range of Osteospermum Afrikaans, which is new to Ouderings for the 2016 season.

There are two reasons we love this new range. They have been bred to flower under high temperatures, so they will explode with masses of flowers from spring until frost. Add to that the fact that

the Afrikaans are low growing and very compact and easy to grow, staying under 30cm tall. They don't become tall and scraggly like other traditional Osteospermum varieties, making them the perfect addition for pots, planters, containers or garden borders. Basically anywhere that is hot and dry is the perfect spot. Come and have a look at the colour selection; it's pretty spectacular.



**1. Afrikaans Lavender** – Offers cool shades of lavender pink with a dark eye. **2. Afrikaans Pure White** – Pure snow-white flowers with a yellow eye. **3. Afrikaans Purple** – Bold, deep-purple flowers with a dark eye. **4. Afrikaans Sunrise** – Superbly unique with bright shades of pure orange and a crimson eye. **5. Afrikaans Yellow** – Bright sunny shades of pure yellow with a crimson eye.





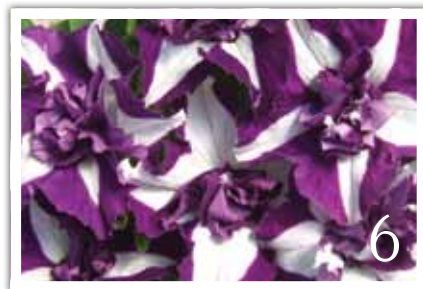


# Petunia

Welcome to the 2016 breeding season of the Oderings perennial petunia collection.

In the last few years Oderings have had some big, new perennial petunia introductions. We released the world's first double black petunia 'Dark Heart', as well as the double flowering series, 'Double

Trouble', the stunning Kissable Pink and quite a few more. The most popular colours have remained this year and have been joined by five of Oderings' exclusively bred petunias and one European import. Have a look; I think you will be as excited as we are with this new selection.



## 1. Denim Blue

Flowers open to a colour resembling stone-washed, faded-blue denim with speckled white markings.

## 4. Jelly Tip

With very large white flowers speckled in a wash of purple, no two flowers are alike, and sometimes they even have stripes.

## 2. Dracula

Extraordinary deep blood-red petals with a dark eye make for a dramatic display.

## 5. Brylie's Pink

Imported from Europe, it has lovely, frilly, clear, double soft-pink flowers on a plant that cascades.

## 3. Lemonade

A soft blend of strawberry-yellow petals with pink margins. Its beauty will brighten any space.

## 6. Double Trouble Astra

A unique and gorgeous double-flowering perennial petunia, with a two-tone mix of blue and bright white in a star pattern.

Plant 'Flirtatious Purple' to attract butterflies & bees.

# LAVENDER

## Flirtatious Purple

This cute and compact plant represents a new generation of lavender. 'Flirtatious Purple' produces an abundance of eye-catching, gorgeously perfumed dark-purple flowers that sit high above attractive silver-green foliage. Even though this lavender is called a French or butterfly lavender, Flirtatious Purple is actually a Spanish lavender, delivering a long-lasting – and a little bit addictive – spicy fragrance that floats through the air.

Flirtatious Purple also offers superior branching and uniformity with a lovely show of flowers that entirely covers a mounded habit. This

hardy lavender is suitable for garden borders and will thrive in pots, containers or planters.

Flirtatious Purple will reach a height and spread of 30–40cm. The splendid, winged flower spikes appear in late spring and last well into late summer. The flowers are self-cleaning, and the plants produce a good secondary flush of flowers. Flirtatious Purple thrives in hot and humid conditions, so for best results, plant in full sun and well-drained soil.

**KIWICARE®**

PLANThealth<sup>®</sup>

## Insect Hit Granules

Simply sprinkle onto soil in flowerbeds and around hedges and shrubs to control a wide range of insect pests in the soil and on your plants. Easy to use – no diluting or spraying!

**350 g**  
Ready to use



**PROUDLY  
NZ  
MADE**

Controls insects:



Psyllids



Slaters



Mealy Bugs



Scale Insects



Ants



Aphids  
and more...

[kiwicare.co.nz](http://kiwicare.co.nz)



# Basil Pesto Party

## For a longer harvesting season

I don't know about you but I love basil. It's so yummy and refreshing in pasta, curries and salads. My favourite would be a traditional Italian pizza. If I had one complaint about basil, it would be the difficulty the home gardener often has growing their own. This is because basil is extremely frost tender, which makes summer the ideal time to grow basil. But with the heat in the summer, basil will often go to seed just as the plant is lush and productive, which is extremely frustrating for us home gardeners.

So here at Oderings, we were extremely excited to find a gem that any basil lover is going to appreciate.

Introducing Basil Pesto Party, whose claim to fame is how late it flowers and goes to seed. Pesto Party will actually flower 14 weeks later than all the other sweet basil varieties, giving you a much longer harvesting season to enjoy the fresh, aromatic and delicious leaves. Pesto Party grows to a height of 30cm, has a pleasing aroma similar to sweet basil and is generally used fresh in recipes.



## BRUSSELS HERB ALL-IN-1

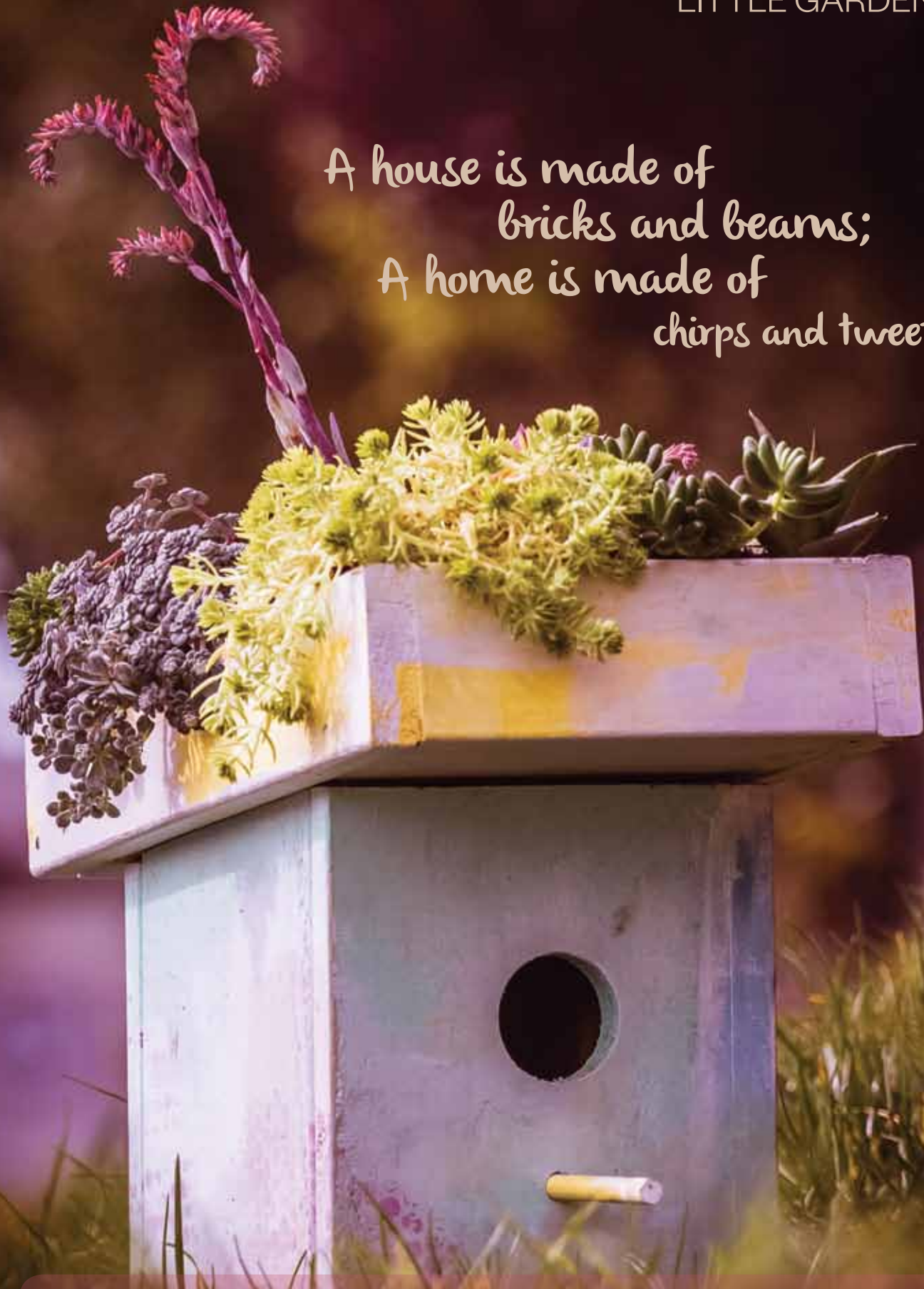
- Includes multi-blade stainless steel herb scissors
- Container proof
- 100% cotton cord
- Great gift idea, beautifully packaged



*Revolutionary watering system for healthy herbs*



A house is made of  
bricks and beams;  
A home is made of  
chirps and tweets.



Summer is coming and what better way to get the kids involved in the garden than by making them honorary landlords to some seasonal tenants. Birdhouses are essential in every home, as there is often a shortage of nesting areas in our backyards. The birds even get a roof-top garden to play with. Plant with hardy

succulents to get the best effect, and try a lick of paint to make sure your birds have the best home on the block.

Provide your backyard birds a home with this DIY kit in stores or online now for \$34.99.



# IMPATIENS

## *Double Vision*

Spectacular colour is easily achievable for the shaded or semi-shaded areas of your home with Impatiens Double Vision, with the gorgeous, fully double, multi-petaled flowers, which are open and broad.

Oderings are growing a simply 'must have' for your gorgeous pots, bowls and planters. Double Vision Impatiens are bright, bold and beautiful, and best of all they are a true, fully double variety.

Previously we have grown only a seed-propagated impatiens variety, but seed-grown varieties have only a semi-double flower, which means that some of the flowers will be fully double, some flowers will be ruffled and some will stay single. Not ideal for many keen gardeners. To get you a fully double impatiens, we had to look to Europe.

Double Vision have a nice, tidy, dwarf mounding-to-trailing habit with an exciting colour range.

Double Vision is one of the most exciting varieties we are growing in 2016. Try it; you won't be disappointed.



Double Vision  
Cherry



Double Vision  
Red



Double Vision  
White



Double Vision  
Red Star



Double Vision  
Rose Star



Double Vision  
Apple Blossom

## When water just isn't good enough

WATER  
ONLY

WATER  
+  
THRIVE  
NATURAL FISH  
& SEAWEED +



## Sometimes nature needs a helping hand

To really nourish plants and encourage abundant lush foliage, flowers and fruit, they need more than water. They need to be fed regularly.

The Yates® Thrive® liquid fertiliser range contain nutrient rich fish and seaweed which has been gently cold composted to retain the delicate plant growth boosting compounds not found in other fertilisers that use heat extraction methods.

Add to that powerful levels of NPK nutrients for lush healthy plants.

**Help nature Thrive.**

Above images are taken from independent growing trials conducted by Eurofins Agrosience Services NZ Ltd on Cos Lettuces fertilised with Thrive Natural Fish & Seaweed +. Grown in a basic potting media in a greenhouse controlled at an average air temperature of 16°C, over an 8 week growing period commencing in August 2015.

See [www.yates.co.nz](http://www.yates.co.nz) for more information on the range & fertilising hints and tips.

©Yates and Thrive are registered trade marks of DuluxGroup (Australia) Pty Ltd.

**Yates**  
**Thrive®**



# FLOWER HACK

Making a flower arrangement at home starts by taking some time to notice what is hiding in our gardens and all they have to offer. Home gardens have pockets full of beauties, with perennials, annuals, herbs and foliage plants, and when we stop to take note, we often become surprised by what a masterpiece we have to play with.



# THE THREE LAYERS TO CONSIDER WHEN FLOWER ARRANGING



Layer one uses foliage, berries or vines. These give the arrangement texture and movement.



Layer two uses smaller flowers. This layer creates uniformity for the entire design.



Layer three uses large flowers. These create the focal point of the arrangement.

Although there are principles to floristry design, as a home florist you don't need to feel ruled by them. Trust that the flower and foliage from your home will guide you to create your own, individual masterpiece.

## PRINCIPLE 1: PROPORTION AND SCALE

Decide how large your arrangement is going to be; this should be one and a half to two times the width of the container.

## PRINCIPLE 2: BALANCE

Within layer one you need to set your visual style. Here we are showing an asymmetrical style. The magnolia leaf, rock daisy, ligularia and solidago create elongation, and although it is placed unevenly, it still gives the eye an impression of balance.

## PRINCIPLE 3: RHYTHM

The arrangement should have movement. This helps to create a visual path so that the eye can travel around the entire arrangement.

## PRINCIPLE 4: LINE AND FORM

Consider lines created by the foliage, as well as the form the flower shape will provide. Here we have used rounded flower shapes to contrast and soften the boldness of the foliage in layer one. Smaller flowers are normally used in layer two in groups of threes or fives in repetition.

## PRINCIPLE 5: FOCAL POINT

This is the impressive flower and focal piece of the arrangement, and it is normally a large-sized flower in the arrangement that first attracts the eye such as the protea used in layer three.

## PRINCIPLE 6: CONTRAST

In layer three use darker flowers to contrast against bright flowers in layer two. Think about your colour palette before you start. Here we have used a complementary colour scheme, choosing colours from opposite sides of the colour wheel. One colour should dominate; in this case the dominant is the pink of the protea, winter roses and ranunculus with a smaller impact from the lime of the chrysanthemum and solidago.

## TIPS

Make life easier and use floral foam. This will help to support your layers, making the flowers and foliage easy to arrange and move around if need be.

While arranging, stand back and assess your work. Do not be afraid to move things around, pull foliage out or add flowers in. There is no right or wrong way, so have fun with it.

# COMBAT 3-IN-1



If you have heard of or used Ocean Grow, you will likely know the resulting plant growth is amazing, as is the flavour boost it offers vegetables and fruit. But you may not realise that it also helps as a bug repellent, because the likelihood of insect infestations is dramatically reduced when plants are healthy. Ocean Grow also promotes soil microbial life and the ability to provide nutrients available through both plant roots and leaf absorption.

Last year Ocean Grow introduced Combat 3-in-1 for Roses, and although the label on the bottle limits it to roses, it's actually also excellent for other ornamentals too. Not only does it contain a natural fish fertiliser with all the minerals and trace elements for healthy plants, this fish food has been combined with an insecticide and fungicide, which provides systemic control of black spot, powdery mildew, rust, aphids, mites, thrips, caterpillars and budworm. Combat is a three-in-one fertiliser, fungicide and insecticide.

#### **So how does it work?**

Ocean Grow is made using a unique process that retains the fish nutrients present in the whole fish. The fish is minced with liquid fish extract and inoculated with a proprietary blend of cultures and vitamins. Natural enzymes from the fish gut are added, which digest the fish, breaking it into tiny amino acids. No heat or added water is used in this process, which means all the minerals, trace elements, vitamins and hormones remain active.

By adding Myclobutanil (a systemic fungicide) and Tau-Fluvalinate (a pyrethroid insecticide), Combat for Roses is probably the only three-in-one for roses and other ornamentals available anywhere in the world.

Rose growers who have used Combat rave about it, and if you have grown roses before, you know that without the right product, it can be quite a bit of work. Combat 3-in-1 for Roses proved its worth by conducting lengthy testing with rose growing societies, who time and again came back with positive comments.

"I have used Combat for Roses on my own roses and have had great results, as have many other members"

**– Peter Bamber, president  
of the Canterbury Rose  
Society**

To combine the natural goodness from Ocean Grow and the insect and fungicide present in Combat 3-in-1 for Roses, visit us in store or online today.



## OCEAN GROW

New Zealand's own Combat for Roses and other Ornamentals.

Ocean Grow now introduces **Combat for Roses** and other Ornamentals.

Not only an insecticide and fungicide but a natural fish fertiliser with minerals and trace elements essential for healthy plants.

Systemic control of Black Spot, Powdery Mildew and Rust.  
Kills Aphids, Mites, Thrips, Caterpillars and Budworm.

For more information, go to [www.oderings.co.nz](http://www.oderings.co.nz)







# BUG R OFF!

Rachel Vogan shares her advice on dealing with bugs. Don't get mad when bugs arrive in your garden, get even.

As a self-confessed plantaholic, the garden is my happy place. It glues me together in a way that little else does. Now as the vegetable garden is bursting into life and I am flat-out planting and sowing seeds, it is a busy but happy time.

Every year no matter how hard I try to keep bugs at bay, I will get a problem of some sort. Sometimes it may be white fly on my tomatoes or aphids on the wonderful soft new shoots of my Margaret Merrill roses, or it might be slugs and snails in my lettuces and cabbages. I always advocate using slug and snail pellets, but it is easy to forget to reapply every few weeks.

To avoid any of these problems I always aim to keep my plants happy and healthy. Regular watering is essential for seeds and vegetables, and soaking punnets of seedlings in "Fish and Seaweed Booster" limits transplant shock and gives the young roots a kick-start that little else can match. Booster acts like a steroid for plants, especially young ones, as the soft roots find it easy to take up. It should be a staple in the garden shed.

However, when something goes wrong, and it always does, I am always ready with a bottle of Beat A Bug. I keep it under the garden seat near the glass house in the vegetable garden. I use it for everything and have been doing so for years and years. It is a blend



of natural chilli, garlic and pyrethrum. You could try to blend this stuff up at home, but as you can imagine, it wouldn't be easy. And I would rather spend my time doing other things!

I love Beat A Bug because it works every single time. Spray to control aphids, green fly, white fly, slugs and snails and even caterpillars. What adds to its appeal is the ready-to-use trigger bottle, which means there is no mixing and fluffing around; when I see a problem I can deal with it straightaway. If you hang around for a few minutes you can see the insects starting to struggle and collapse. And one of the best things is it's safe to use on any plants, edible especially, as it is developed with a natural philosophy, which means for edible crops there is no chance of eating anything bad for you. You do still need to wash any vegetables as you normally would before eating.

## Growing Tips

**Tomatoes:** This season when you are stocking up on tomato essentials like seeds, plants, Easi Grow Jiffy Pellets, stakes and tomato food, add Beat A Bug to your list.

**Lettuces and Leafy Greens:** Go nuts and plant plenty of these now, and if slugs and snails appear, zap them with Beat A Bug. They hate it and soon pack up.

**Roses:** Fertilise roses now with Nitroblue. This will give them a welcome burst of energy, resulting in spectacular blooms. If you spot any aphids or greenfly, blast them with Beat A Bug.

Thanks to Rachel Vogan and Egmont Commercial for this article.



# NEW TOMATOES

## TANGLED

Last year we tested some new varieties, and here are the top picks for the 2016 season. Grow and taste them and tell us your thoughts. We were certainly impressed and believe you will be too. By planting these three varieties this year, you get a mixture of tomato colours and a true taste sensation.

### CHERRY BOMB



An explosion of flavour is the outcome with this reliably sweet, true cherry tomato with red round fruit, which are produced over a long fruiting season. Cherry Bomb is a lovely, juicy and delicious variety.

### DARK DELIGHT



The first black cherry tomato we have ever produced. If you are wondering why a black tomato would be appealing, it's simple... flavour, flavour and more flavour. This delightful fruit has an irresistible sweet yet rich taste, and the plant is a heavy cropper producing an abundance of fruit.



Similar to Tomato Rapunzel, Tomato Tangled is packed full of even more flavour! This truss cocktail tomato will hit you with a new taste sensation. Don't be put off by the fruit, which is slightly pinker than red. This pink fruit is sweeter and juicier. Each tomato weighs between 20 and 25 grams, and their high-yielding trusses will produce up to 40 fruits per truss, which is a sight to behold.

## SUPERIOR CUTTING EDGE

ARS Corporation's unique tradition and innovative technology in an extremely competitive market has placed them as one of the leading brands in the Gardening and Horticultural world.

This range of professional tools have been developed from over 100 years of experience! A rigid policy makes ARS Corporation what it is today – Customer focused. Quality driven.

Available from all Oderings Garden Centres throughout New Zealand or online at: [www.oderings.co.nz](http://www.oderings.co.nz)

Get your ARS Pruning tools today and experience the superior cutting edge. ARS – Always Real Sharp!

*“Odering's loves the edge of Japanese steel”*



## 130DX BYPASS SECATEURS

The ARS 130DX Bypass Secateurs are compact and easy to handle. The razor sharp blades feature hard chrome plating – proudly manufactured in Japan. The compact handles make these secateurs extremely comfortable to use, and this model is a favourite with all keen gardeners and nurserymen.



# Click and spray

One click, different sprayers. Long lasting, high quality GARDENA Nozzles and Sprayers guarantee easy watering in all areas of your garden.



**GARDENA Cleaning Nozzle**  
Our classic spray nozzle model. Choose any water jet strength from hard jet to fine mist. Made in Germany.



**GARDENA Classic Cleaning Nozzle**  
With Flow Control. Everything you need for cleaning and watering jobs in the garden. Made in Germany.



**GARDENA Classic Multi Sprayer**  
Has three different water spray patterns: soft spray, bubble jet spray, 9 point hard jet. Made in Germany.

 **GARDENA®**

[gardena.com](https://gardena.com)

SPEND LESS TIME  
SHOPPING  
& MORE TIME  
GARDENING

SHOP ONLINE AT [ODERINGS.CO.NZ](http://ODERINGS.CO.NZ)

 **ODERINGS**  
GARDEN CENTRES

**ODERINGS**  
**GIFT CARDS**



Available in store or online.

**REDEEMABLE AT OVER 100 GARDEN CENTRES NATIONWIDE**